



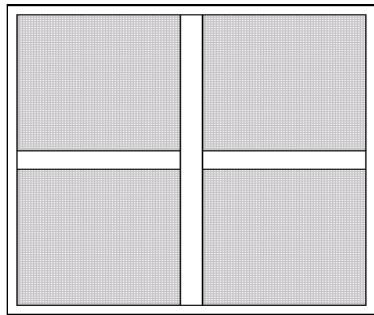
General

- Everything is view from the outside
- The product used is Smart's white aluminium Smartwall section; **note- this system is thermally broken**
- This is a thermal shop front screen and door system suitable for all types of ground floor treatment, where enhanced thermal performance is required. This system is ideal for use in schools, colleges and other educational buildings
- Swing, hinges and automatic commercial entrance doors and ground floor treatment
- Anti-finger trap
- Unless otherwise specified we will include a drainage tray in the bottom rail of the frame; Smart's part number IMP056 and no projecting cill
- Unless otherwise stated we will include glass on the following basis;
 - 1. **Double glazed units:** 28mm clear toughened units, comprising of 6mm clear K/6mm clear float glass with charcoal grey super spacer

Note: It is the responsibility of the customer to correctly identify the glass type required for the installation taking into account all safety and security requirements, the glass sizes that can be catered for are as follows:

Double Glazed 24 28 32

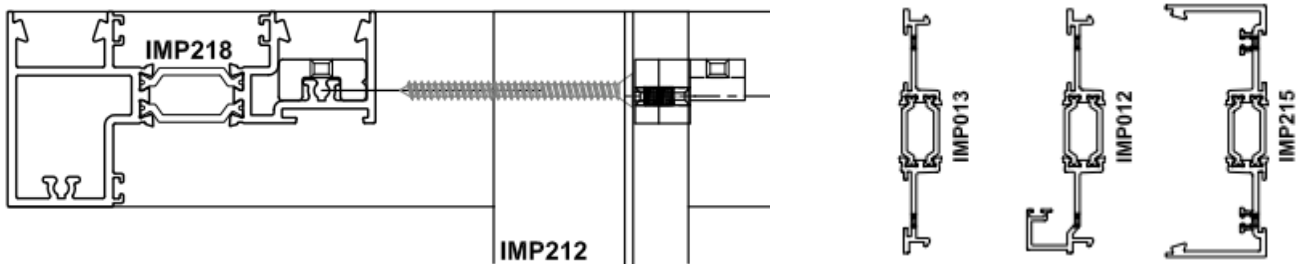
- Frames will be taken as double glazed unless indicated otherwise
- White frames to Smart's internal colour reference 9910 gloss with silver handles
- Coloured frames to be painted to the RAL number specified with black handles
- Standard panels are ESP200 Polystyrene with a 1.2mm Aluminium Skin to both the inner and outer face
- Dual colour available

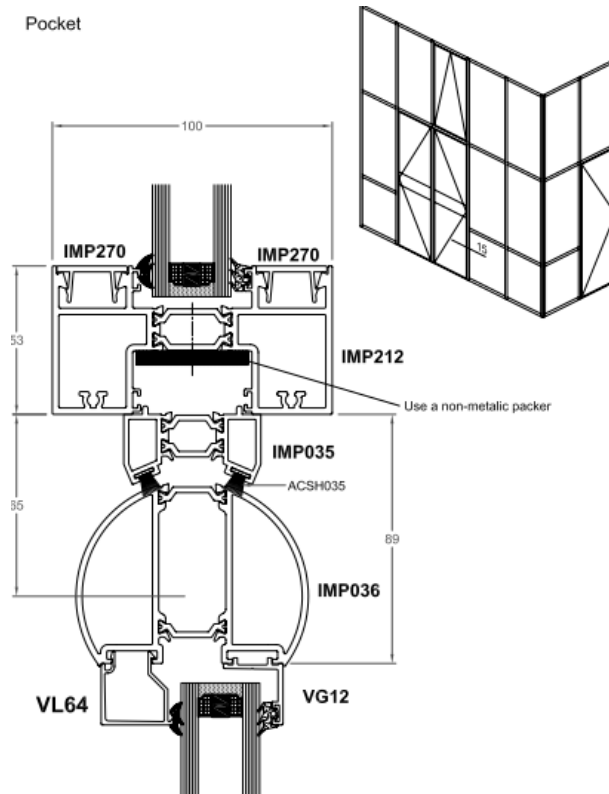
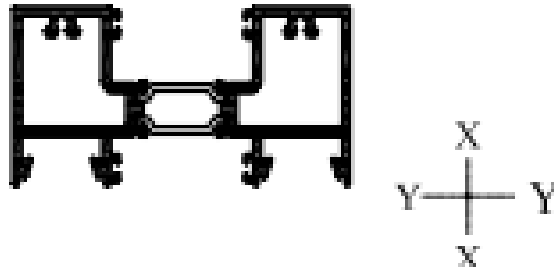


Screens

- When no dimensions are given equal splits will be used for mullions and transoms
- Unless otherwise specified, all screens will be quoted using a 53mm mullion and 144mm transom as per the components identified in the table below
- **Note:** Additional transoms/mullions are available in the following sizes;
 1. 74mm
 2. 200mm
- Where opening casement frames are required in Smartwall frame, these will be quoted for as extra items in Alitherm 55 section for fitting into the Shopline sub-section on site by the customer
- Large screens will be manufactured in modular sections for coupling together on site by the customer
- The sections used will be as standard;

DOUBLE GLAZED	
Section Description	Smarts Ref Code
Jambs	IMP212
Top	IMP218
Bottom	IMP218
Midrail	IMP030
Mullion	IMP212
Glazing Bead	IMP615





Doors

- Doors to be fitted with handles as per the following:
 1. Silver handles to white aluminium section
 2. Black handles to coloured aluminium section
- Doors to be fitted with non-hold open concealed closures, hold open closures are available upon request at an additional cost
- Doors to be fitted as standard with anti-finger trap stiles
- Standard doors to incorporate the following locking mechanisms:
 1. **Single Door** – A single hook locking facility fitted to the centre of the door stile
 2. **Double Door** – A single hook locking facility fitted to the centre of the master door stile and flushbolts fitted top and bottom to the slave door stile
- Doors to be fitted as standard with 12mm high double ramp threshold
Doors and side screens will be manufactured in modular sections for coupling together on site by the customer

- Unless otherwise specified, all screen and door combinations will be quoting using 53mm mullions and transoms and 144mm midrails

Note: Additional transoms/mullions are available for specifying by the customer in the following sizes:

- 74mm
- 200mm

- The sections used as standard will be:

DOUBLE GLAZED - FRAME					
MODULE 1-Same as Screen		MODULE 2-Same as Single Glazed		MODULE 3-Same as Screen	
Section Description	Smarts Ref Code	Section Description	Smarts Ref Code	Section Description	Smarts Ref Code
Left Jamb	IMP212 & IMP013	Right Jamb	IMP212 & IMP270	Jamb	IMP212 & IMP013
Right Jamb	IMP214	Left Jamb	IMP212 IMP035	Mullion	IMP214
Top rail	IMP218 & IMP013	Head	IMP010 IMP011	Top rail	IMP218 & IMP013
Bottom rail	IMP218 & IMP056	Bottom	IMP410	Bottom rail	IMP218 & IMP056
Midrail	IMP032			Midrail	IMP032
Glazing Bead	IMP261			Glazing Bead	IMP261

OPENING SASH			
SINGLE GLAZED		DOUBLE GLAZED	
Section Description	Smarts Ref Code	Section Description	Smarts Ref Code
Left Stile	IMP036	Left Stile	IMP036
Right Stile	IMP020	Right Stile	IMP020
Top rail	IMP120	Top Rail	IMP120
Bottom rail	IMP027	Bottom Rail	IMP027
Midrail	IMP032	Midrail	IMP032
Glazing Bead	IMP630	Glazing Bead	IMP610